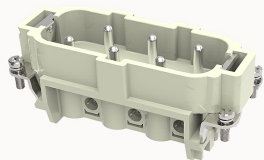


Overview

Product information



DSB-006-M-21020000093

Heavy-duty insert, Number of contacts: 6+PE, Dimension: 16B, Rated voltage : 500V, Rated current: 35A, Male insert, Crimping connector

Product advantages

- Screw connection technology, applicable to a wide range of wire specifications;
- No need special tools, easy to operate;
- Less materials, easy to manage;
- With grounding protection.

Product certification



Technical data

Product drawing

3D model

□

Marking

classification	Insert
Series	DSB

versions

Connection method	Screw connection
Female/Male	Male
Dimension	16B
Number of positions	6
PE Contacts	Yes

Material characteristics

Material (insert)	Polycarbonate (PC)
Material (Contact)	Copper alloy
Surface (Contact)	Silver plated
Flammability rating	V-0
color	Grey/White (RAL 7032)
RoHS	Comply with RoHS exemptions

Electrical parameters

Rated current	35A
	500V
Rated pulse voltage	6KV
Pollution level	3
On the basis of UL /CSARated current	600V
Insulation resistance	$\geq 10000M\Omega$
Contact resistance	$\leq 1m\Omega$
Temperature range	-40°C~+125°C
working life-mating cycles	≥ 500 time
Strip length	7.5mm
Rated torque	1.2N.m
Conductor cross sections (mm ²)	1.5-6mm ²
Conductor cross sections(AWG)	16-10AWG

Standards

Connection meets standards	DIN EN 60664 DIN EN 61984
----------------------------	---------------------------

Accessories

Accessories

Screwdriver

/

Business data

Order number	2102000093
Packing unit	100
Minimum order quantity	5
Products weight (without packaging)	81