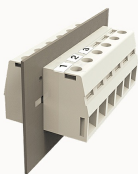


## Przegląd

## Informacje o produkcie

**DGH95-10090000015**

Through-wall terminal blocks, Rated current: 232A. Rated voltage (III/3) : 1000V, Width: 25.0mm, Color: gray, Contact surface : Tin

## Zalety produktu

- Screw connection technology, safe and reliable
- Through-wall installation, free positioning

## Certyfikacja produktu

## Dane techniczne

## Rysunek produktu

## Model 3D

## Connection capacity

Conductor cross section solid	25~95mm <sup>2</sup>
Conductor cross section flexible	25~95mm <sup>2</sup>
AWG	4~4/0AWG
Strip length	27mm

## Electrical parameters UL

Rated voltage (B)	600V
Rated voltage (C)	600V
Rated voltage (D)	600V
Rated current (B)	230A
Rated current (D)	5A

Rated current (C)	230A
-------------------	------

#### Electrical parameters IEC

Rated current(III/3)	1000V
Rated current	1000V
	232A
Rated surge voltage(III/3)	8KV
Rated surge voltage(III/2)	8KV

#### Item properties

Type of installation	panel
Connection method	Screw connection
Screwdriver	Hexagon screwdriver
screw thread	M8
Pitch	25mm
Number of potentials	1
Pluggable or not	Yes
Number of rows	1

#### Material data

Environmental items	Compliant with REACH/RoHS
Contact material	copper
Contact point metal surface	tin-plated
Contact zone metal surface	tin-plated
Insulation Materials	PA66
Insulating material group	I
Flammability rating	UL94V-0

#### Mechanical tests

Test Specification	IEC60947/UL1059
--------------------	-----------------

#### Environmental data

Ambient temperature (operation)	-40°C~105°C
---------------------------------	-------------

#### Aksesoria

##### Accessories

Coding strip	/
Bridge	/
Marking strip	/
Others	/

##### Tool

Operating tool	/
Screwdriver	/

#### Dane biznesowe

numer zamówienia	10090000015
Jednostka opakowania	10
Minimalna ilość zamówienia	30
Waga produktów (bez opakowania)	293