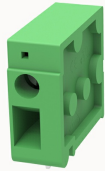


Aperçu

informations sur le produit



DG105R-5.0-10A-10040002829

PCB terminal blocks, Rated current:24A, Rated voltage (III/2) 250V, Cross section: 2.5mm², Pitch: 5.0mm, connectoon method: Front screw connector, Color: green, Contact surface :Tin

Les avantages des produits

- Universal connection method to ensure a high degree of flexibility in device design
- Two solder pins reduce mechanical stress on solder joints
- Different poles can be combined through the side lock

Les certificats des produits



Caractéristiques techniques

Dessin de produit

Modèle 3D

□

Processing notes

Process

Wave soldering/manual soldering

Connection capacity

| | |
|----------------------------------|------------------------|
| Conductor cross section solid | 0.5~2.5mm ² |
| Conductor cross section flexible | 0.5~2.5mm ² |
| AWG | 30~12AWG |
| Torque | 0.4N.m |
| Strip length | 12mm |

Electrical parameters UL

| | |
|-------------------|------|
| Rated voltage (B) | 300V |
| Rated voltage (D) | 300V |
| Rated current (B) | 20A |
| Rated current (D) | 10A |

Electrical parameters IEC

| | |
|-------------------------------------|------|
| Rated voltage | 250V |
| Rated current | 24A |
| Rated current(III/2) | 250V |
| Rated power frequency voltage(1min) | 2KV |

Item properties

| | |
|----------------------|-------------------------------|
| Connection direction | 0° |
| Type of installation | PCB welding |
| Pin arrangement | Double-row in a straight line |
| Connection method | Screw connection |
| Screwdriver | Slotted screwdriver |
| screw thread | M2.5 |
| Pitch | 5mm |
| Number of potentials | 1 |
| Pluggable or not | no |
| Number of rows | 1 |

Material data

| | |
|-----------------------------|---------------------------|
| Environmental items | Compliant with REACH/RoHS |
| Contact material | Copper alloy |
| Contact point metal surface | tin-plated |
| Insulation Materials | PA66 |

| | |
|---------------------------|---------|
| Insulating material group | I |
| Flammability rating | UL94V-0 |

Mechanical tests

| | |
|--------------------|-----------------|
| Test Specification | UL1059/IEC60998 |
|--------------------|-----------------|

Environmental data

| | |
|---------------------------------|-------------|
| Ambient temperature (operation) | -40°C~105°C |
|---------------------------------|-------------|

Accessoires

tool

| | |
|----------------|-------------------------------|
| screwdriver | 0.6x3.5mm,Slotted screwdriver |
| Operating tool | / |

Accessories

| | |
|---------------|---|
| Coding strip | / |
| Marking strip | / |
| Bridge | / |
| Other | / |

Tool

| | |
|----------------|--------------------------------|
| Screwdriver | 0.6x3.5mm, Slotted screwdriver |
| Operating tool | / |

Accessories

| | |
|---------------|---|
| Coding strip | / |
| Bridge | / |
| Marking strip | / |
| Others | / |

Caractéristiques commerciales

| | |
|--------------------------------------|-------------|
| Numéro de la commande | 10040002829 |
| Unité d'emballage | 1500 |
| Quantité minimale de commande | |
| Le poids de produit (sans emballage) | 3.931 |