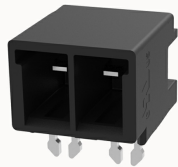


## Przegląd

## Informacje o produkcie


**9EDGRB-HC-5.0-10030010262**

Pluggable terminal blocks, Rated current: 20A. Rated voltage (III/3) : 300V, pitch: 5.0mm, Color: black, Contact surface : Tin

## Zalety produktu

- Push-in spring connection, easy wiring
- SNAP-LOCK series, with self-locking buckle

## Certyfikacja produktu



## Dane techniczne

## Rysunek produktu

## Model 3D

□

## Packaging information

Type of packaging

box-packed

## Electrical parameters UL

Rated voltage (B)

300V

Rated voltage (D)

300V

Rated current (B)

20A

Rated current (D)

10A

## Electrical parameters IEC

Rated voltage

300V

Rated current(III/3)

300V

|                            |     |
|----------------------------|-----|
| Rated current              | 20A |
| Rated surge voltage(III/3) | 4KV |

#### Item properties

|                      |                               |
|----------------------|-------------------------------|
| Type of installation | PCB welding                   |
| Pin arrangement      | Single row in a straight line |
| Connection method    | Push-in spring connection     |
| Pitch                | 5mm                           |
| Number of potentials | 2                             |
| Pluggable or not     | Yes                           |
| Number of rows       | 1                             |

#### Material data

|                                   |                           |
|-----------------------------------|---------------------------|
| Environmental items               | Compliant with REACH/RoHS |
| Contact material                  | Copper alloy              |
| Contact zone metal surface        | tin-plated                |
| Insulation Materials              | PA66                      |
| Relative tracking index CTI       | 600V                      |
| Glow Wire Flammability Index GWFI | 850                       |
| Shell color                       | Black                     |
| Flammability rating               | UL94V-0                   |

#### Mechanical tests

|                    |                  |
|--------------------|------------------|
| Test Specification | IEC61984/ UL1059 |
|--------------------|------------------|

#### Environmental data

|                                 |             |
|---------------------------------|-------------|
| Ambient temperature (operation) | -40°C~105°C |
|---------------------------------|-------------|

**Tool**

|                |   |
|----------------|---|
| Screwdriver    | / |
| Operating tool | / |

**Accessories**

|               |                 |
|---------------|-----------------|
| Coding strip  | 2EDG-PWP-01A(H) |
| Bridge        | /               |
| Marking strip | /               |
| Others        | /               |

**Dane biznesowe**

|                                 |             |
|---------------------------------|-------------|
| numer zamówienia                | 10030010262 |
| Jednostka opakowania            | 1600        |
| Minimalna ilość zamówienia      |             |
| Waga produktów (bez opakowania) | 1.6         |