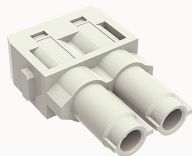


## Przegląd

## Informacje o produkcie

**DMK7-002-F(14-22mm<sup>2</sup>)-21020000271**

Heavy-duty insert, Number of contacts:2, Dimension:1 module Spaces, Rated voltage :1000V, Rated current:70A, Female insert, axial Screw connector

## Zalety produktu

- Axial Screw connection technology, applicable to a wide range of wire specifications;
- Less materials, easy to manage;
- Modular products, easy to assemble and maintain .

## Certyfikacja produktu



## Dane techniczne

## Rysunek produktu

## Model 3D

□

## Marking

classification	Insert
Series	DM

## versions

Connection method	Axial screw connection
Female/Male	Female
Dimension	1 module
Number of positions	2
PE Contacts	No

## Material characteristics

Material (insert)	Polycarbonate (PC)
Material (Contact)	Copper alloy
Surface (Contact)	Silver plated
Flammability rating	V-0
color	Grey/White (RAL 7032)
RoHS	Comply with RoHS exemptions

#### Electrical parameters

Rated current	70A
	1000V
Rated pulse voltage	8KV
Pollution level	3
On the basis of UL /CSARated current	600V
Insulation resistance	$\geq 10000M\Omega$
Contact resistance	$\leq 0.5m\Omega$
Temperature range	-40°C~+125°C
working life-mating cycles	$\geq 500$ time
Rated torque	2N.m(6mm <sup>2</sup> ) 3N.m(10mm <sup>2</sup> ) 4N.m(16mm <sup>2</sup> ) 5N.m(22mm <sup>2</sup> )
Conductor cross sections (mm <sup>2</sup> )	14-22mm <sup>2</sup>
Conductor cross sections(AWG)	7-5AWG

#### Standards

Connection meets standards	DIN EN 60664 DIN EN 61984
----------------------------	---------------------------

#### Aksesoria

##### Accessories

Screwdriver	/
-------------	---

Dane biznesowe

numer zamówienia	21020000271
Jednostka opakowania	100
Minimalna ilość zamówienia	5
Waga produktów (bez opakowania)	29.5