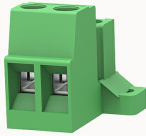


Przegląd

Informacje o produkcie

**2EDG-STD-5.08-10010002825**

Pluggable terminal blocks, Rated current: 24A, Rated voltage (III/2) : 250V, pitch: 5.08mm, Color: green, Contact surface : Tin

Zalety produktu

- Adapt to multi-type plugs, device design is highly flexible
- Keying requirements can be met
- Panel mounting, suitable for various situations

Certyfikacja produktu



Dane techniczne

Rysunek produktu

Model 3D

□

Processing notes

Process

Wave soldering/manual soldering

Connection capacity

Conductor cross section solid	1.0~2.5mm ²
Conductor cross section flexible	1.0~2.5mm ²
AWG	28~12AWG
Torque	0.6N.m
Strip length	8mm

Electrical parameters UL

Rated voltage (B)	300V
Rated voltage (D)	300V
Rated current (B)	15A
Rated current (D)	10A

Electrical parameters IEC

Rated voltage	250V
Rated current	24A
Rated current(III/2)	250V
Rated surge voltage(III/2)	4KV

Item properties

Connection direction	0°
Connection method	Screw connection
Screwdriver	Slotted screwdriver
screw thread	M3
Pitch	5.08mm
Number of potentials	2
Pluggable or not	Yes
Number of rows	1

Material data

Environmental items	Compliant with REACH/RoHS
Contact material	Copper alloy
Contact point metal surface	tin-plated
Contact zone metal surface	tin-plated
Insulation Materials	PA66
Insulating material group	I

Flammability rating	UL94V-0
Mechanical tests	
Test Specification	IEC61984/ UL1059
Environmental data	
Ambient temperature (operation)	-40°C~105°C

Akcesoria

Tool	
Screwdriver	0.6x3.5, Slotted screwdriver
Operating tool	/
Accessories	
Coding strip	2EDG-PWI
Bridge	/
Marking strip	/
Others	/

Dane biznesowe

numer zamówienia	10010002825
Jednostka opakowania	100
Minimalna ilość zamówienia	30
Waga produktów (bez opakowania)	5.83