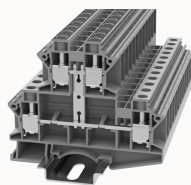


Aperçu

informations sur le produit



DCKKB10-PV-11020000184

Screw type Din-Rail TB, connector method: Screw/plug-in connector, Rated voltage: 500 V, Rated current: 57 A, Number of connectors: 4, Number of potentials: 1, Cross section: 0.5 mm² - 10 mm², AWG: 20 - 6, Width: 10 mm, Color: gray, Mounting type: NS 35/7.5, NS 35/15

Les avantages des produits

- Steel screw connection technology, reliable connection;
- Equipped with dual-channel bridge wells, circuit connection testing is more flexible;
- Unique plug-in bridge, high circuit connection efficiency;
- The box has a baffle to prevent mis-insertion;
- Can be matched with marker strips to avoid incorrect insertion of wires.

Les certificats des produits



Caractéristiques techniques

Dessin de produit

Modèle 3D

□

Wiring data

Screw type	Slotted screw
Strip length	10~12mm
Conductor cross section solid	0.5~10mm ²
Conductor cross section flexible	0.5~10mm ²
Conductor cross section solid AWG	20~6
screw thread	M4
Tightening torque	1.54N.m

Environmental conditions

Ambient temperature (operation)	-40 °C ~ 105 °C (depending on derating curve)
Relative humidity (storage/transport)	25%~75%

UL Electrical parameters

Rated current	65A
---------------	-----

IEC Electrical parameters

Rated voltage (III / 3)	500V
Rated current (III / 3)	57A
Rated surge voltage	6KV

Environmental protection

REACH SVHC	Lead 7439-92-1
RoHS	No excessive harmful substances

Dimension

NS 35/7,5 Height	72.5mm
End plate width	1.5mm
NS 35/15 Height	80mm
length	83.9mm
width	10mm
Height	71.2mm

Overview

Connection method	screw connection
Number of rows	2
number of connections	4
Open-end side panels	Yes
Insulation Materials	PA

Flame retardant grade, in line with UL 94

V0

Accessoires

Marker

Top marker	/
Side marker	ZB10
Marker support	/

Accessories

Slotted screwdriver size (Blade thickness x Width)	1x4
Bridge	DFA10
End cover	D-DCKKB10
Partition plate	/

Installation

End clamp	E-WS N / E-PC-1100A
Terminal strip marker support	KLM3-20x8 / KLM3-44x8 / DLM2 / DBE-1 / DBE-2
DIN rail	NS35/7.5 & NS35/15

Caractéristiques commerciales

Numéro de la commande	11020000184
Unité d'emballage	20
Quantité minimale de commande	20
Le poids de produit (sans emballage)	42.99