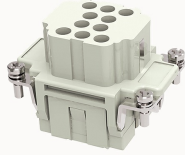


Overview

Product information



DEE-010-FC-21020000048

Heavy-duty insert, Number of contacts: 10+PE, Dimension: 6B, Rated voltage : 500V, Rated current: 16A, Female insert, Crimping connector

Product advantages

- ☑ Crimping connection technology, high wiring efficiency
- ☑ Suitable for vibration occasions;
- ☑ The wiring harness can be pre-installed;
- ☑ Choose contacts with different wire diameters and coatings;
- ☑ High-density pins, saving installation space;
- ☑ With grounding protection.

Product certification



Technical data

Product drawing

3D model

□

Marking

classification	Insert
Series	DEE

Versions

Connection method	Crimping connection
Female/Male	Female
Dimension	6B
Number of positions	10

PE Contacts	Yes
-------------	-----

Material characteristics

Material (insert)	Polycarbonate (PC)
Material (Contact)	Copper alloy
Surface (Contact)	Silver plated/gold plated
Flammability rating	V-0
color	Grey/White (RAL 7032)
RoHS	Comply with RoHS exemptions

Electrical parameters

Rated current	16A
	500V
Rated pulse voltage	6KV
Pollution level	3
On the basis of UL /CSARated current	600V
Insulation resistance	$\geq 10000M\Omega$
Contact resistance	$\leq 1m\Omega$
Temperature range	-40°C~+125°C
working life-mating cycles	≥ 500 time
Strip length	7.5mm
Conductor cross sections (mm ²)	0.14-4.0mm ²
Conductor cross sections(AWG)	26-12AWG

Standards

Connection meets standards	DIN EN 60664 DIN EN 61984
----------------------------	---------------------------

Accessories

Accessories

Crimping tool|Removal tool

/

Business data

Order number	21020000048
Packing unit	100
Minimum order quantity	5
Products weight (without packaging)	39.2