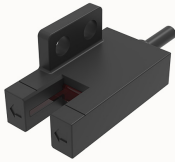


## Overview

### Product information



## Slot sensor DSR-304NA-SE-30160000036

Output mode: NPN open collector, Repeatability: 0.01mm, Indicator: Red LED,  
Switching mode: L.on (light-on action)/D.on (light-off action) Switchable light  
source: Infrared LED, 940nm

### Product advantages

- Normally open/normally closed output, convenient for wiring
- Slot depth 8.5mm, to prevent the detected object from hitting the bottom of the slot to the greatest extent

### Product certification

## Technical data

### Product drawing

### 3D model

□

### Electrical data

Switch mode	L.on (light-incoming action) / D.on (light-blocking action) switchable
Output mode	NPN open collector
Response time	≤0.33ms
Switching frequency	3kHz
Operating voltage	5~24V DC
Current consumption	≤20mA
Residual voltage	1.5V or less (load current 100mA, wire length 2m)
Load current	≤100mA (24VDC)
Insulation resistance	≥20MΩ (250VDC)

Pressure resistance	AC, 1000V 1 minute, between all power connection terminals and the housing
Protection circuit	Reverse polarity protection/surge protection

#### Environmental parameters

Storage temperature	-30~80℃
Working environment humidity	5~85%RH (no condensation)
Storage humidity	5~95%RH (no condensation)
Ambient illumination	Incandescent lamp ≤1000 Lux
Vibration resistance	10~55Hz, 1.5mm amplitude, 2 hours each in X, Y, and Z directions
Protection level	IP50
Operating temperature	-25~55℃

#### Basic parameters

How it works	Photoelectric sensors
Shell style	R-Type
Optical working principle	Shooting
Detection distance	5.0mm
Light source	Infrared LED, 940nm
Indicator lights	Red LED

#### Mechanical parameters

Connection	2M/4 core cable 4mm diameter
Size	26x14.2x13.7mm
Weight	0.025kg
Material	PC

#### Accessories

Business data

Order number	30160000036
Packing unit	1
Minimum order quantity	1
Products weight (without packaging)	0.025kg