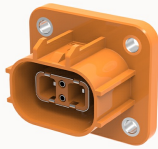


Overview

Product information



DBYR-02A28-C03-26040000006

2PIN 280 High Voltage Connector, rated operating current: 16A
 Max@2.5mm², 24A Max@4mm². Rated operating voltage: 1000V DC. Protection
 level: IP68, IP6K9K, IPXXB

Product advantages

- Wide applicability: Can be applied to passenger cars, commercial vehicles, Taking into account performance, space and cost performance.
- High compatibility: Compatible with the wiring ,welding plate connection.
- High performance: Excellent waterproof performance, EMC strong performance, superior overcurrent capability.

Product certification

Technical data

Product drawing

3D model

□

Overview

shield	Yes
--------	-----

Environmental conditions

Maximum altitude	5000m(Above sea level)
IP class	IP67

Signal feedback

HVIL	Yes
------	-----

Versions

Number of positions	2
---------------------	---

Electrical parameters IEC

Rated current	16A
---------------	-----

General parameters

Error-proof coding	E-Code
	A-Code
	B-Code
	C-Code
	D-Code

Material data

Shell color	Orange
Flammability rating	UL94V-0

Durability test

Insert / pull out cycle	50
-------------------------	----

Electrical parameters

Rated current	1000V
---------------	-------

Technical specification

Insulation resistance	>200MΩ 1000V DC
Conductor cross sections (mm ²)	2.5mm ²

Environmental data

Ambient temperature (operation)	-40°C~125°C(depending on derating curve)
---------------------------------	--

Accessories

Business data

Order number	2604000006
Packing unit	

Minimum order quantity	
Products weight (without packaging)	