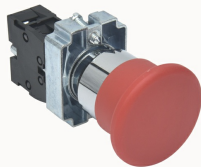


Overview

Product information

**DT22MU-MR10/RD-31010000401**

φ22mm Mushroom Button, Self-Resetting, Color: red, Contact Type: one normally open

Product advantages

- The shell is made of zinc alloy metal material, with good wear resistance and room temperature mechanical properties
- Adopt modular design to meet customers' requirements for installation convenience, use flexibility, product durability and so on
- The button head and the middle seat are fixed with screws, which has stronger anti-impact, anti-drop, anti-vibration and other properties

Product certification



Technical data

Product drawing

3D model

General parameters

Insulation resistance

≥ 100 MΩ

Technical specification

Power frequency withstand voltage

1890VAC/50Hz/60s

Impact resistance

Button 70g, Mushroom head button 15g, Select switch 200g

Environment humidity

45-85%RH

Vibration resistant

1.0mm/50HZ

Mechanical life

≥ 2 million times

Electrical life	≥ 200,000 times
Nominal insulation voltage	440V
Conventional heating current	10A
Contact resistance	≤50mΩ

Environmental data

Ambient temperature (operation)	-25 °C ... 55 °C
---------------------------------	------------------

Accessories

Business data

Order number	31010000401
Packing unit	10
Minimum order quantity	10
Products weight (without packaging)	