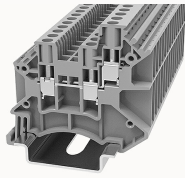


Overview

Product information



DC2.5-TW-11020000067

Screw type Din-Rail TB, connector method: Screw/plug-in connector, Rated voltage: 1000 V, Rated current: 24 A, Number of connectors: 3, Number of potentials: 1, Cross section: 0.2 mm² - 4 mm², AWG: 28 - 12, Width: 5.1 mm, Color: gray, Mounting type: NS 35/7.5, NS 35/15

Product advantages

- ☑ Steel screw connection technology, reliable connection;
- ☑ Equipped with dual-channel bridge wells, circuit connection testing is more flexible;
- ☑ Unique plug-in bridge, high circuit connection efficiency;
- ☑ The box has a baffle to prevent mis-insertion;
- ☑ Can be matched with marker strips to avoid incorrect insertion of wires.

Product certification



Technical data

Product drawing

3D model

□

Overview

Number of rows	1
number of connections	3
Open-end side panels	Yes
Insulation Materials	PA
Flame retardant grade, in line with UL 94	V0
Insulating material group	I

standard test	IEC60947-7-1
Connection method	screw connection

Dimension

width	5.1mm
End plate width	1.5mm
Height	47.7mm
NS 35/7,5 Height	49.2mm
NS 35/15 Height	56.7mm
length	50.9mm

Wiring data

Strip length	8~9mm
Conductor cross section solid AWG	28~12
Conductor cross section solid	0.2~4mm ²
Conductor cross section flexible	0.2~2.5mm ²
Conductor cross section flexible (ferrule without plastic sleeve)	0.2-2.5mm ²
Conductor cross section flexible (ferrule with plastic sleeve)	0.5-1.5mm ²
2 flexible conductors with a TWIN ferrule	0.5-1mm ²
Screw type	Slotted screw
screw thread	M2.5
Tightening torque	0.4N.m

IEC Electrical parameters

Rated voltage (III / 3)	1000V
Rated current (III / 3)	24A
Rated surge voltage	8KV

UL Electrical parameters

Rated voltage	600V
Rated current	20A

Environmental conditions

Ambient temperature (operation)	-40 °C ~ 105 °C (depending on derating curve)
Relative humidity (storage/transport)	25%~75%
Ambient temperature (storage / transport)	-25°C~60°C

Mechanical performance test

Mechanical strength	Passed the test
Fixing support	Passed the test
Rotational Pull Test	Passed the test

Electrical performance test

Voltage drop	≤3.2mV
Temperature rise test	≤45 K

Safety test

Anti-finger touch	Passed the test
-------------------	-----------------

Environmental protection

RoHS	No excessive harmful substances
REACH SVHC	Lead 7439-92-1

Accessories

Marker

Top marker	/
Side marker	ZB5 / WB5
Marker support	/

Accessories

Slotted screwdriver size (Blade thickness x Width)	0.6×3.5
Bridge	DFAXX-5.2
End cover	D-DC2.5-TW
Partition plate	/

Installation

End clamp	E-WS N / E-PC-1100A
Terminal strip marker support	KLM3-20x8 / KLM3-44x8 / DLM2 / DBE-1 / DBE-2
DIN rail	NS35/7.5 & NS35/15

Marking & Installation

Marking strip	ZB5
Marker cards	DBE-1

Accessories

End cover	D-DC2.5-TW
Bridge	DFA2.5
End clamp	E-WS
DIN rail	NS35/7.5-1000-00A(H)

Business data

Order number	11020000067
Packing unit	50
Minimum order quantity	50
Products weight (without packaging)	6.451