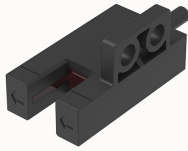


Overview

Product information

**Slot sensor DSF-302NA-SE-30160000032**

Output mode: NPN open collector, Repeatability: 0.01mm, Indicator: Red LED,
Switching mode: L.on (light-on action)/D.on (light-off action) Switchable light
source: Infrared LED, 940nm

Product advantages

- Normally open/normally closed output, convenient for wiring
- Slot depth 8.5mm, to prevent the detected object from hitting the bottom of the slot to the greatest extent

Product certification

Technical data

Product drawing

3D model

□

Electrical data

Switch mode	L.on (light-incoming action) / D.on (light-blocking action) switchable
Output mode	NPN open collector
Response time	≤0.33ms
Switching frequency	3kHz
Operating voltage	5~24V DC
Current consumption	≤20mA
Residual voltage	1.5V or less (load current 100mA, wire length 2m)
Load current	≤100mA (24VDC)
Insulation resistance	≥20MΩ (250VDC)

Pressure resistance	AC, 1000V 1 minute, between all power connection terminals and the housing
Protection circuit	Reverse polarity protection/surge protection

Environmental parameters

Storage temperature	-30~80℃
Working environment humidity	5~85%RH (no condensation)
Storage humidity	5~95%RH (no condensation)
Ambient illumination	Incandescent lamp ≤1000 Lux
Vibration resistance	10~55Hz, 0.5mm amplitude, 2 hours in each of the three directions of X, Y and Z
Protection level	IP50
Operating temperature	-25~55℃

Basic parameters

How it works	Photoelectric sensors
Shell style	Type F
Optical working principle	Shooting
Detection distance	5.0mm
Light source	Infrared LED, 940nm
Indicator lights	Red LED

Mechanical parameters

Connection	2m/4-core cable
Size	26x14.2x13.7mm
Weight	0.025kg
Material	PC

Accessories

Business data

Order number	30160000032
Packing unit	1
Minimum order quantity	1
Products weight (without packaging)	0.025kg