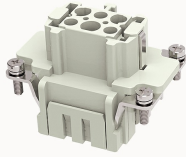


## Overview

### Product information



## DE-006-FS-21020000112

Heavy-duty insert, Number of contacts:6+PE, Dimension:6B, Rated voltage :500V, Rated current:16A, Female insert, Cage clamp connector

### Product advantages

- Spring cage connection technology, high vibration resistance;
- No special tools required, maintenance-free ;
- Less materials, easy to manage;
- With grounding protection.

### Product certification



## Technical data

### Product drawing

### 3D model

□

### Marking

classification	Insert
Series	DE

### Versions

Connection method	Spring cage connection
Female/Male	Female
Dimension	6B
Number of positions	6
PE Contacts	Yes

## Material characteristics

Material (insert)	Polycarbonate (PC)
Material (Contact)	Copper alloy
Surface (Contact)	Silver plated
Flammability rating	V-0
color	Grey/White (RAL 7032)
RoHS	Comply with RoHS exemptions

## Electrical parameters

Rated current	16A
	500V
Rated pulse voltage	6KV
Pollution level	3
On the basis of UL /CSARated current	600V
Insulation resistance	$\geq 10000M\Omega$
Contact resistance	$\leq 1m\Omega$
Temperature range	-40°C~+125°C
working life-mating cycles	$\geq 500$ time
Strip length	7-9mm
Conductor cross sections (mm <sup>2</sup> )	0.14-2.5mm <sup>2</sup>
Conductor cross sections(AWG)	26-14AWG

## Standards

Connection meets standards	DIN EN 60664 DIN EN 61984
----------------------------	---------------------------

## Accessories

### Accessories

Slotted Screwdriver

/

Business data

Order number	21020000112
Packing unit	100
Minimum order quantity	5
Products weight (without packaging)	50.81